

Nicholas Stuchlak

Lighting/Electrical Option

Shawn Good

Cypress Hill Elementary School

Texas

September 9, 2013

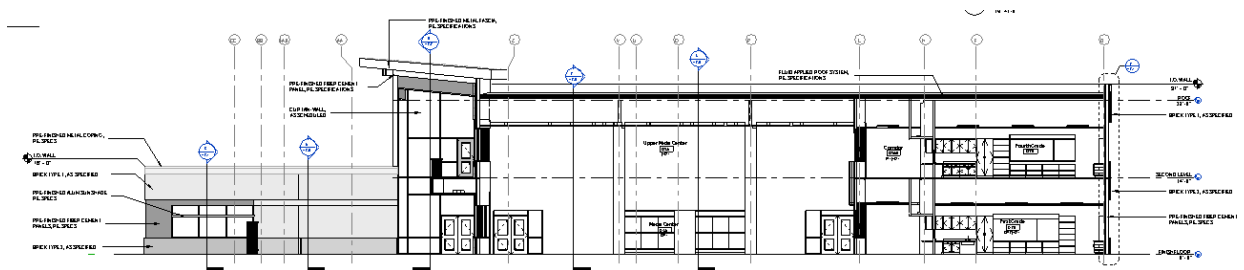
Technical Report 1, Part 1: Lighting Proposal Memo

Media Center

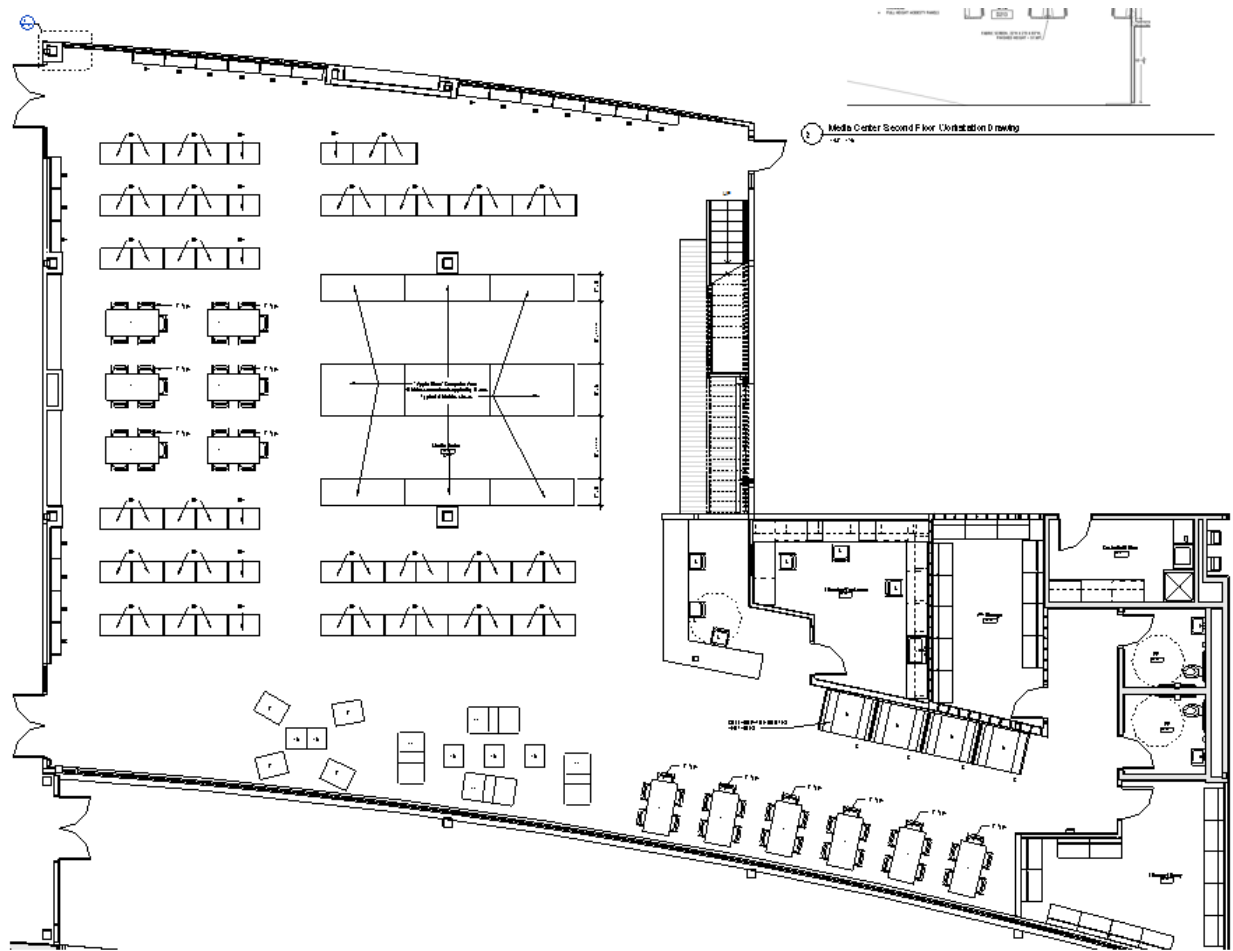
Media Center Square footage – 4900 sq. ft

Media Center Height – 28'

The media center is a technology center for the students and faculty to use. It functions as both a library and technology center for research and school work. The ceiling is double high for a very open feeling while one reads or works. The large section located plan west is where most research and work will occur because it contains the library books along with computers for individual and group work. Along the wall plan south, there are tables for lounging or group activities. Because of the computers and the possibly of group work, the vertical work plane is just as important as the horizontal work plane in this space. There is also a reception desk where the librarians will work to help anyone who may need it. They will need to be able to do many different tasks such as computer work, writing, reading, cataloging, inventory, and much more.



Section of Media Center



Media Center Enlarged Plan

Vestibule and Corridor A101

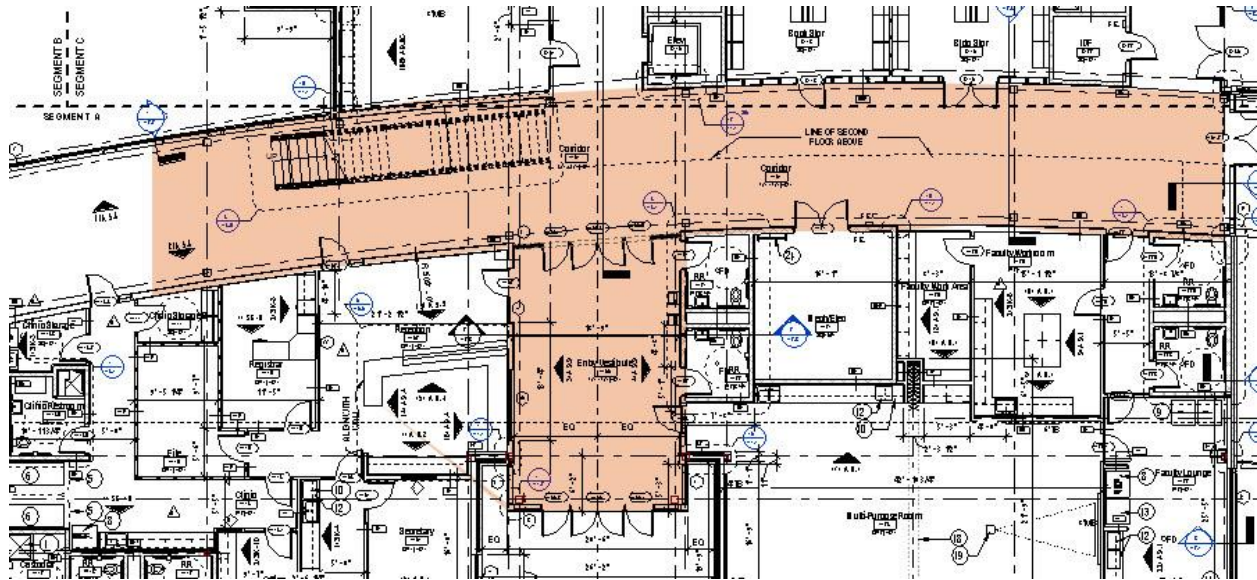
Vestibule area – 575 sq. ft.

Corridor area – 1925 sq. ft.

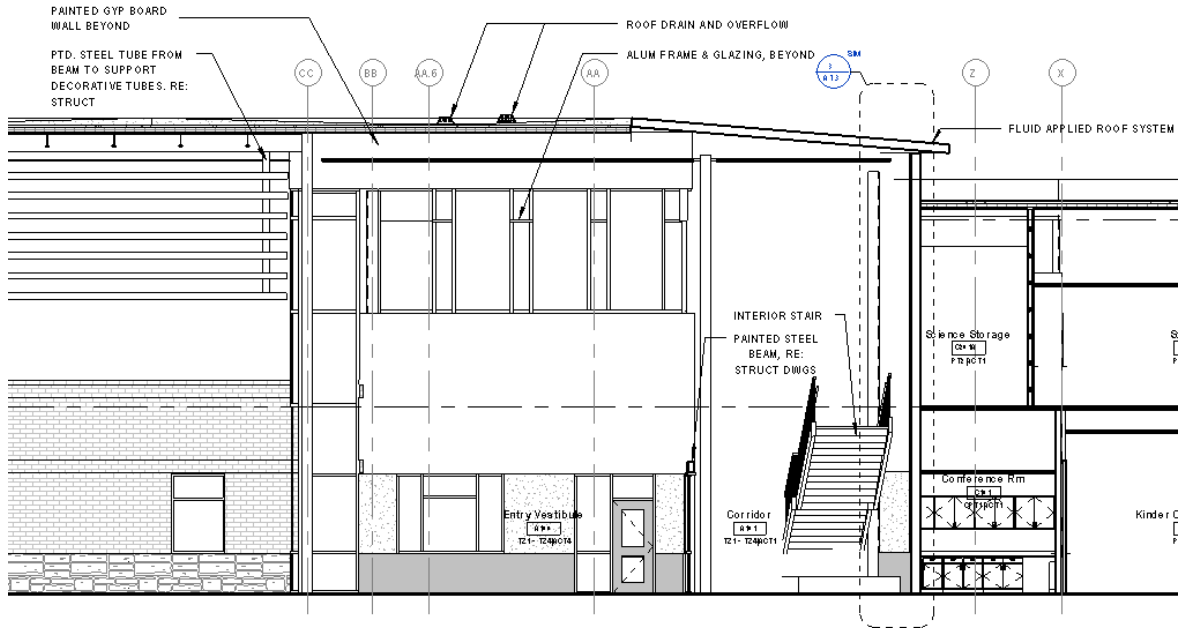
Total area – 2500 sq. ft.

The vestibule is the main entrance into the school for all students, faculty, and visitors. In the middle of the south façade of the building, the two single doors and one double door open into a 30' by 20' glass enclosed area meant to usher in visitors and transition from the outside to the school. The vestibule may serve as an impromptu gathering space should the need arise. The clear partitions between the visitor and the exterior create a connection to the outside, if only visually. This helps ease the patron into the building. As this is mostly a transition space there are no visual activities that would need to be addressed for the vestibule except if a student or associated club were to hang posters for awareness or school activities, potentially. The largest activity to take place in this space is being able to flawlessly walk through and adjust from exterior conditions to the school's conditions.

The corridor is the main artery for the entire school. The section branching right off from the vestibule in both east and west direction will be assessed for this part of the memo. This section is pretty indicative of the rest of the corridors throughout the school. The wall height is a consistent 14' tall but the actual width of the corridor changes a couple times. There are sections with large glass windows to the outside. The largest activity is the act of transition. People operating in these corridors will be only be moving through them so it is important to have the work plane lit sufficiently to encourage circulation. For these two spaces, the psychological impression of “spaciousness/closure” will be applied.



Vestibule and Corridor in Plan

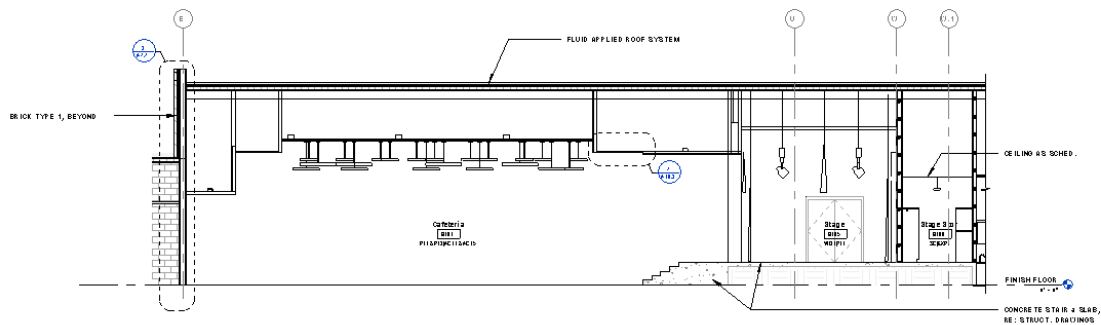


Vestibule Interior Section

Cafeteria

Cafeteria area – 3575 sq. ft.

The cafeteria is a large space with a double height ceiling for a 28' wall height. It is 55.5' long and 65' wide. The cafeteria is where the students are served and eat their lunches, either brought from home or prepared and sold to them by the district. This space also doubles as a stage space for a number of different possibilities, such as music, dances, plays, and other large scale gatherings. The stage also comes equipped with a digital projector for the audio/visual hook up to a computer. The most common function, however, is for consumption of food. With so many different possibilities for this space, a scene control could be very beneficial.



Cafeteria Section

